

ABELLS STAMPS

PO BOX 510
TENTERFIELD
NSW 2372
AUSTRALIA

All items are for postal auction. Payment accepted by, Paypal, Bank cheques drawn against an Australian bank in Australian dollars, and AU\$. Please ask for current exchange rate, or go to the universal currency converter link at <http://www.xe.com/ucc/> for current rates.

Australian customers may also pay by personal cheque, postal money order or direct deposit (account details supplied on request).

All prices are in Australian dollars. No questions asked money back guarantee on all items in the unlikely event of dissatisfaction. Bids on lots can

SALE CLOSING AT 12MN 19/5/2013

be sent via email, or post to the address on the left. Our telephone number is 0418745347, EMAIL abells7@bigpond.com or through our website www.abellsstamps.com.

RESERVE:- The lots are reserved at 80% of the estimate i.e if the estimate is \$2 then the reserve is \$1.60.

Abbreviations: MUH=Mint unhinged, MNG=Mint no gum, MH=Mint hinged, VFU = Very Fine Used FU=Fine used, GU=Good used (commercial usage or heavier cancel), CTO=Cancelled to order, Sg is Stanley Gibbons catalogue number,

LOT NO ESTIMATE

Kangaroos 1st Wmk

1.	1/2d Green fine used	\$ 1.50
2	1d red pair GU	\$ 2.00
3	1d red perf large "OS" used GU	\$ 2.00
4	2d grey pair GU	\$ 7.00
5	2 1/2 blue pair GU	\$12.00
6	6d blue GU	\$ 8.00
7	9d Violet GU	\$10.00
8		

2nd W/Mark

8	2d grey GU	\$ 5.00
9	2 1/2d Blue GU	\$15.00
10	6d blue GU	\$12.00
11	9d Violet Fine used	\$15.00
12	1/- green GU	\$15.00

3rd W/Mark

13	2d grey GU	\$ 6.00
14	2 1/2 Indigo GU	\$ 6.00
15	3d Olive fine used	\$ 6.00
16	6d brown fine used	\$ 5.00
17	6d blue pair fine used	\$10.00
18	9d Violet GU	\$ 8.00
19	1/- green fine used	\$ 8.00
20	2/- Maroon GU	\$12.00
21	2/- brown GU	\$12.00

Small Multiple Watermark

22	6d Brown + 1/- green fine used	\$10.00
23	2/- Maroon GU	\$ 8.00
24	5/- yellow 2 nibbled perfs top right	\$40.00

Comm of Australia W/mark

25	9d + 2 x 2/- maroon fine used	\$8.00
----	-------------------------------	--------

LOT NO ESTIMATE

KGv

26	1d red single w/mark pair mint	\$ 6.00
27	1/2d green single w/m mint pr top stamp mint bottom mint unhinged.	\$ 3.00
28	1 1/4d small multiple w/mark perf 12 1/2 x 13 1/2 GU	\$ 8.00
29	Kgv 1 1/4d single w/mark GU	\$ 6.00
30	Kgv 1 1/4d Comm Aust w/mark GU.	\$ 6.00

PRE-DECIMAL STAMPS

31	1927 1 1/2d Canberra MUH	\$.40
32	1938 2d ANN NSW PAIR MUH	\$ 4.00
33	1935 3d blue Macarthur MINT	\$ 2.00
34	1935 2d KGV jubilee MUH	\$ 1.00
35	1936 Cent SA 2d+3d MINT	\$ 3.00
36	1953 QEII coronation MUH set	\$ 3.00
37	2/- QANTAS MUH	\$ 1.00
38	1964 4/- NAVIGATOR PR MINT	\$ 4.00
39	2/- Aboriginal Art No w/mark MUH	\$ 4.00
40.	5 1/2d EMU IMPRINT BL 4 MINT	\$ 3.00
41	1954 Royal Visit set MUH	\$ 2.00

DECIMAL ISSUES

42	1974 9c on 8c OPAL MUH BL 20	\$ 3.00
43	1973 8c Opal MUH Cnr bl 9	\$ 1.50
44	1968 25c Intelsat MUH single	\$ 1.00
45	1979 25c Xmas Cnr block 4 MUH	\$ 1.50
46	1978 18c imperf mini sheet MUH	\$ 1.00
47	1970 Cook Mini Sheet MUH	\$ 4.00
48	1968 20c World Weather Watch MUH block 4	\$4.00
49	1967 Christmas set MUH	\$1.00
50	1966 3c coil strip 4 MUH	\$1.00
51	1975 10c COIL PR MUH	\$1.00
51a	4c coil strip 3 MUH	

NEW SOUTH WALES

LOT NO		ESTIMATE
52	2d blue diadem 3 1/2 margins VFU	\$12.00
53	1d red perf diadem GU	\$ 5.00
54	6d Brown imperforate diadem small thin top right corner not visisble from the front.	\$19.00
55	8d yellow daidem GU	\$15.00
56	5d Green daidem VFU	\$ 1.00
57	6d Violet diadem GU	\$ 5.00
58	1/- Red Diadem GU	\$ 7.00
59	2d 1888 emu o/printed "OS" mint	\$ 1.00
60	1891 1/2d surcharge pair GU	\$10.00
61	1/- brown 1888 roo GU	\$ 2.00
62	NSW X 7 O/printed "OS" GU to 1/-	\$ 7.00
63	NSW x 6 perf "os" to 1/- roo GU	\$ 7.00

QUEENSLAND

64	2/- blue Large chalon VFU	\$10.00
65	2/6d Vermillion Large Chalon GU	\$10.00
66	5/- Rose Large Chalon VFU	\$10.00
67	10/- Brown Large Chalon FU	\$18.00
68	"1" Pound Green Large Chalon GU	\$25.00
69	1d full face small chalon mint NG Crown over Q watermark	\$15.00
70	1d Full face csmall chalon FU	\$ 4.00
71	2d blue small full face chalon mint with gum small star w/mark	\$ 40.00
72	3d brown small full face chalon small star w/mark GU	\$ 5.00
73	6d Green small full face chalon small star w/mark VFU	\$10.00
74	1/- purple small full face chalon mint no gum no w/mark seen	\$10.00
75	1/- purple small full face chalon VFU	\$ 8.00
76	1d 1st sideface cancel "31" rated ""	\$ 5.00
77	1/- mauve 2nd Sideface VFU	\$ 4.00
78	4D yellow 4th sideface fu	\$ 1.00
79	9D commonwealth issue VFU	\$ 1.00
80	2 1/2d RED 3rd Sideface FU	\$ 3.00
81	1/- Mauve 4th Sideface VFU	\$ 3.00
82	1d Mauve 2nd series duty VFU	\$ 4.00
83	6d Brown 2nd series duty stamp VFU	\$30.00
84	6d Lilac 2nd series duty VFU	\$50.00
85	1/- Green 2nd Series duty VFU	\$20.00
86	2/6D Vermillion 2ND Series duty VFU	\$25.00

TASMANIA

87	1d red Imperforate chalon vfu	\$10.00
88	4d Blue Imperforate chalon W4	\$10.00
89	1d red perf chalon FU	\$ 8.00
90	6d purple full face chalon FU	\$ 7.00
91	6d deep purple chalon postally used	\$10.00
92	1/- Orange Chalon Pair Used	\$15.00
93	6d purple chalon pair FU	\$18.00
94	1/- orange chalon single FU	\$10.00
95	6d purple tablet pair GU	\$ 5.00

TASMANIA CONTINUED

LOT NO		ESTIMATE
96	1/- Tablet Pair GU	\$ 5.00
97	6d platypus duty pair GU	\$ 6.00
98	3d Brown Platypus duty pair GU	\$ 5.00
99	1/- red Platypus Duty pair GU	\$ 6.00
100	6d Platypus duty pair O/printed "revenue" GU	\$ 10.00
101	1d surcharge ON 2d scene MUH	\$ 1.00
102	4d Orange russell falls scene VFU	\$ 4.00
103	1d Surcharge on 2d VFU	\$.50
104	1/- red Platypus duty pair O/printed "Revenue" GU	\$ 15.00
105	6d Lake Scene VFU	\$ 6.00
106	2/6d tablet VFU	\$ 12.00
107	1/- Rose tablet FU	\$ 3.00
108	5/- Mauve sideface GU	\$ 15.00

SOUTH AUSTRALIA

109	2d orange roulette qv sideface FU	\$ 5.00
110	6d blue qv large star w/m FU	\$ 3.00
111	1/- orange QV sideface roulette FU	\$ 40.00
112	1/- yellow QV sideface roulette FU	\$ 40.00
113	3d on 4d blue sideface surcharge FU	\$ 12.00
114	2/- red QV sideface large star w.m	\$ 6.00
115	9d grey-0lilac sideface roulette FU	\$ 8.00
116	9d Purple QV sideface VFU	\$ 4.00
117	10d on 9d Yellow surcharge GU Straight edge at top	\$ 10.00
118	1/2d on 1d prov surcharge VFU	\$ 4.00
119	8d on 9d brown surcharge VFU	\$ 8.00
120	1/2d bantam VFU	\$.50
121	2 1/2d on 4d surcharge VFU	\$ 2.00
122	5d on 6d Brown surcharge o/p "OS used	\$ 15.00
123	6d Blue QV sideface O?P "OS" VFU	\$ 2.00
124	1/2d brown sideface "OS" VFU	\$ 2.00
125	2dorange QV sidfiface "OS" VFU	\$ 2.00
126	1/- Brown QV sideface Roulette VFU	\$ 8.00
127	2/6D long type Thin postage VFU	\$ 10.00
128	6d long type thin postage VFU	\$ 2.00
129	3d long type thin postage VFU	\$ 2.00
130	4d Long type thin postage VFU	\$ 2.00
131	8d blue long type thick postage VFU	\$ 3.00
132	9d Claret long type thick postage VFU	\$ 3.00
133	10d yellow long type thick postage VFU	\$ 6.00
134	1/- long type thick postage VFU	\$ 3.00
135	6d blue long type perf "SA" VFU	\$ 2.00
136	4d Orange long type perf "SA" VFU	\$ 2.00
137	9D claret long type perf "SA" VFU	\$ 2.00
138	1/- brown long type perf "SA" VFU	\$ 3.00

END POSTAL BID SALE

1



2



3



4



5



6



7



8



9



10



11



12



13



14



15



16



17



18



19



20



21



22



23



24



25







42



44



43

50th Anniversary of first Trans-Pacific flight 1928-1978

On 31 May, 1928, Australians Charles Kingsford Smith and Charles Ulm (co-commanders) and Americans Harry Lyon (navigator) and James Warner (radio operator) left Oakland, California in the aircraft 'Southern Cross' to attempt the first flight across the Pacific. Flying via Hawaii and Fiji, they reached Brisbane, Australia 1889 kilometres away, nine days later.

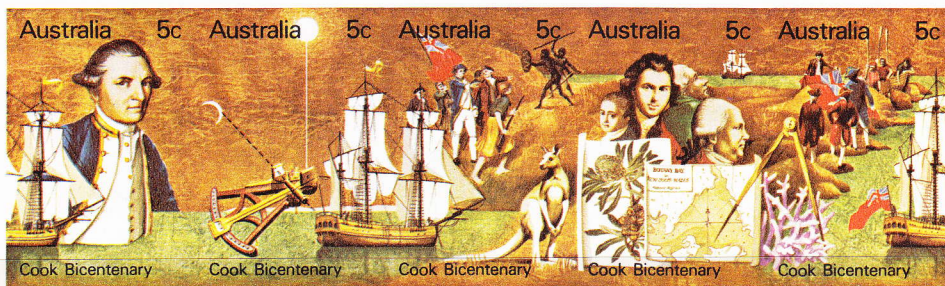
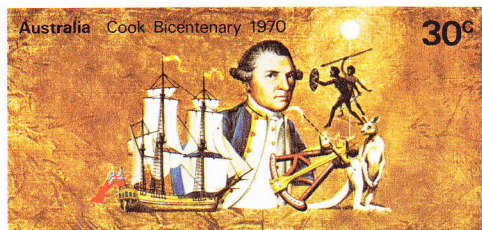
46



45

Captain Cook Bicentenary

DISCOVERY OF EAST COAST OF AUSTRALIA IN 1770



Cook,
giant among
navigators,
enters the
Pacific...

and fixes the
position of the
eastern part of
Australia...

where he finds
new people and
strange animals.

He and his
scientists chart
the shores
and sketch
the flora...

and sovereignty
is proclaimed
over the land
discovered.

47





52



53



54



55



56



57



58



59



60



61



62



63



64



65



66



67



68



69



70



71



72



73



74



75



76

NR



101



102



103



104



105



106



107



108



109



110



111



112



113



114



115



116



117



118



119



120



121



122



123



124



125



126





127



128



129



130



131



132



133



134



135



136



137



138